



Climates of Asahidake hotspring area in late May

- Temp : Max. 13°C/Min. 6°C (Avg. of 2012~20)
- Beware of sudden weather change and road condition



- Issuer : Asahidake Visitor Center
- 〒071-1472 Kamikawa-gun Higashikawa-cho
- Asahidake onsen 9:00~17:00 (TEL) 0166-97-2153 (Closed 12/30~1/5 for the year-end and New year holiday)
- Rental (Boots/Cross-country ski/Snow shoes)
- Mountain and nature information, VR goggle experience
- HP : <https://www.asahidake-vc-2291.jp/>
- FB : https://www.facebook.com/asahidake_vc

Flowers that you can see at Tenninkyo

At Tenninkyo hotspring, flowers begin to bloom a little faster than Asahidake area. Anemone flaccida resembles a strawberry flower, and Heloniopsis orientalis with purple flowers and large leaves, it has a presence. Besides, Communities of Corydalis fumariifolia can be seen. You can also see communities of Asian skunk cabbage at marshlands on the road toward Tenninkyo hotspring.



[Anemone flaccida] Ranunculaceae
A perennial that grows 15~25 cm tall with hairy stems. It is one of the representative flowers of spring mountain.



[Heloniopsis orientalis] Liliales
A perennial that grows 10~30 cm tall in lowland and peat land. Its leaves are elongated spatula-shaped and flowers are beautiful pale red or pale purple, turn to green with time.



Watch out for brown bears !

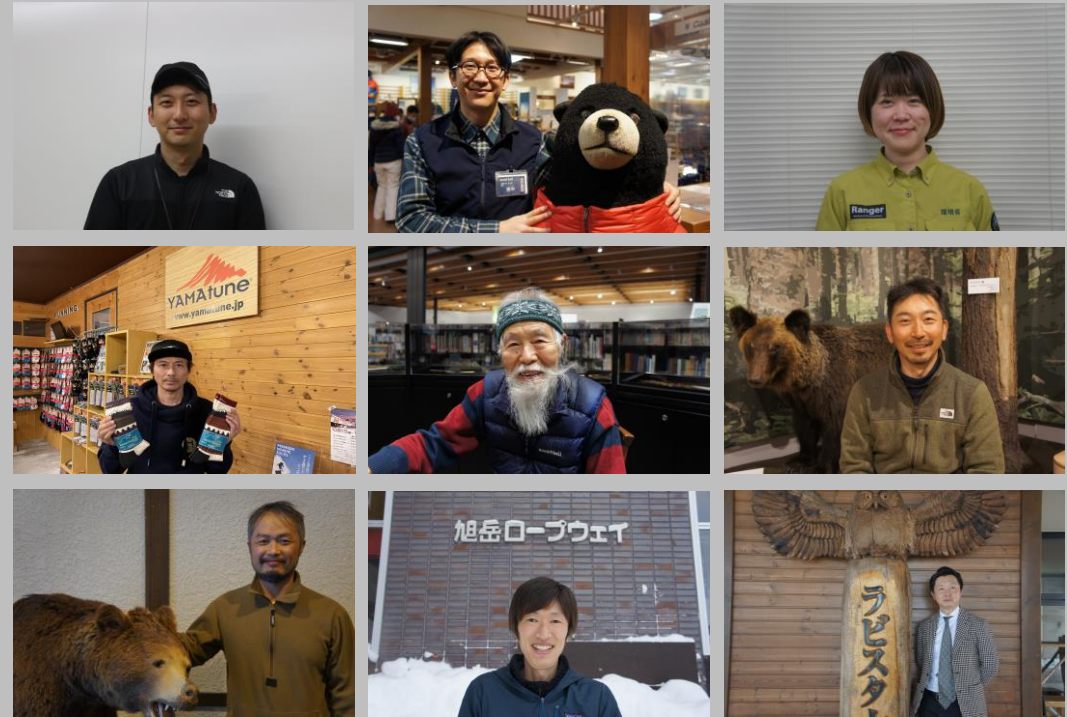
Footprints and excrement that are thought to be brown bears' have been watched one after another at Asahidake hotspring since mid-May. Not only during the early morning and evening hours when brown bears become active, Please be prepared for emergencies by carrying bear bells and bear sprays always,



Surprise ! Mountain Lover Interview — !

The Asahidake visitor Center newsletters will take rest for a while after this issue. A total of 9 people cooperated "Mountain Lover interview" in this season. They told us about how to enjoy mountains and the charm of Asahidake from a different viewpoint, and taught us that there is a common theme, "deepness of Asahidake that cannot be described in words."

I want to experience firsthand the meaning what they've told to me from now on. Thank you once again for allowing me to have an interview with you.



Tour / event information

■ECO Tour

Asahidake Visitor Center holds eco-friendly tours regularly.

Scan here for the latest tour information →

